An aerial photograph of a multi-lane highway with several cars. A white grid of lines is overlaid on the right side of the image, representing a spatial data platform or map overlay. The background shows green fields and some trees.

Creating a successful spatial data platform: Open Maps for Europe

Sallie Payne Snell
Secretary General & Executive Director
EuroGeographics



**Co-funded by
the European Union**

Digital Europe Programme
Grant Agreement No 101100625

CONNECTING YOU TO MAPS, GEOSPATIAL AND LAND INFORMATION FOR EUROPE



#MAPSFOREUROPE

60+   **members** from the whole of geographical Europe

EUROGEOGRAPHICS ACTIVITIES

Well-established network for sharing knowledge, expertise and access to data



Sharing experiences and best practice



Representing our members' interests



Fostering use and re-use of public sector geo-information

MAPS, CADASTRE, AND MORE

Our members provide data to help protect people, the planet and so much more



Environmental monitoring & management



Real-time data for pandemic response



Smarter, sustainable agriculture



Cleaner, safer, intelligent transport



Emergency responses



Aerial survey

TRUST & RELIABILITY

Our members empower society with trusted geospatial services



Trusted daily everywhere for secure ownership transactions, diligent policy elaboration and monitoring



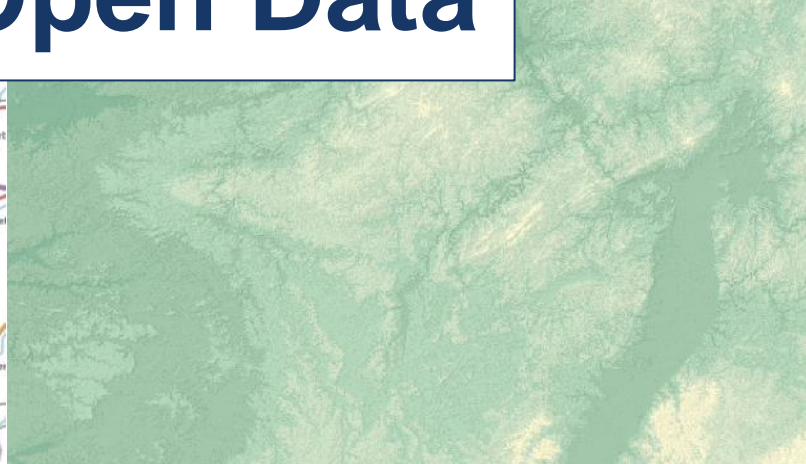
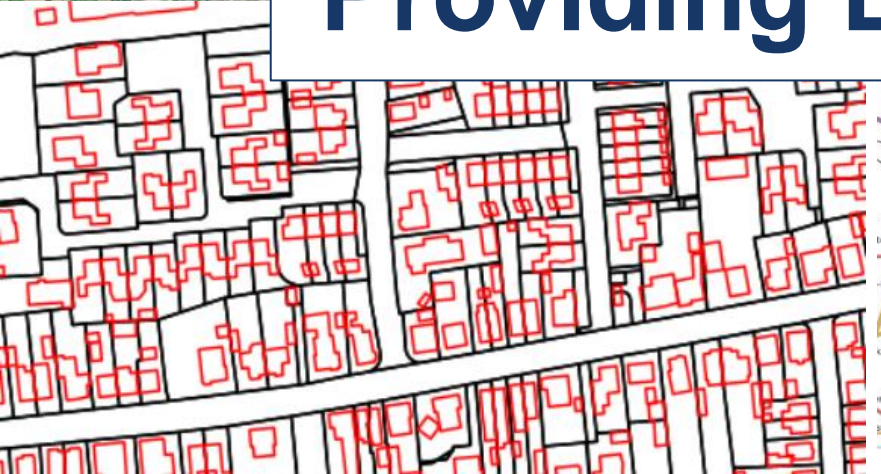
Relied on by European institutions and UN, governments, businesses and citizens



Registered on the EU Transparency Register and bound by its code of conduct

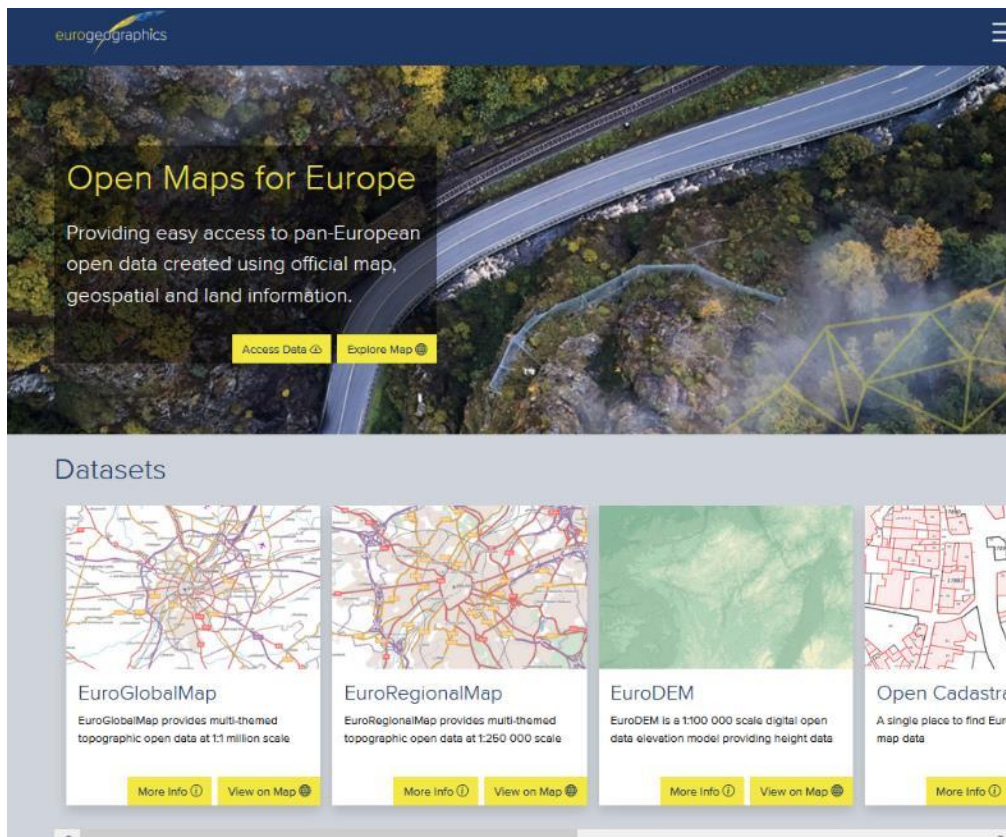


Providing Easy Access to Open Data



Co-financed by the European Union
Connecting Europe Facility

Open Maps for Europe Interface

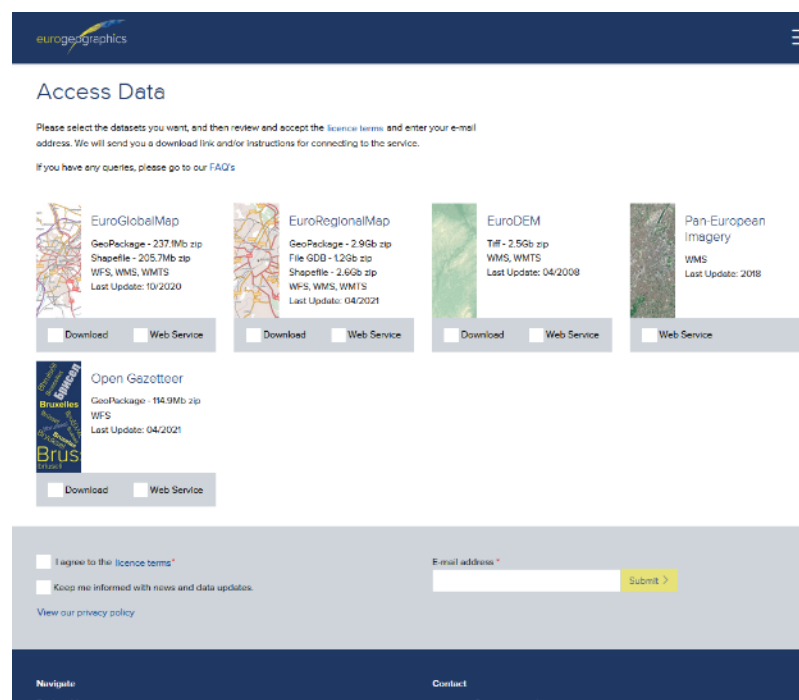


Open Maps for Europe
Providing easy access to pan-European open data created using official map, geospatial and land information.

[Access Data](#) [Explore Map](#)

Datasets

Dataset Name	Description	Scale
EuroGlobalMap	EuroGlobalMap provides multi-themed topographic open data at 1:1 million scale.	1:1 million
EuroRegionalMap	EuroRegionalMap provides multi-themed topographic open data at 1:250 000 scale.	1:250 000
EuroDEM	EuroDEM is a 1:100 000 scale digital open data elevation model providing height data.	1:100 000
Open Cadastral	A single place to find Euro map data.	-



Access Data

Please select the datasets you want, and then review and accept the [licence terms](#), and enter your e-mail address. We will send you a download link and/or instructions for connecting to the service.

If you have any queries, please go to our [FAQ's](#)

Dataset	Download	Web Service
EuroGlobalMap GeoPackage - 237.1Mb zip Shapefile - 205.7Mb zip WFS, WMS, WMTS Last Update: 10/2020	<input type="checkbox"/>	<input type="checkbox"/>
EuroRegionalMap GeoPackage - 2.9Gb zip File GDB - 12Gb zip Shapefile - 2.6Gb zip WFS, WMS, WMTS Last Update: 04/2021	<input type="checkbox"/>	<input type="checkbox"/>
EuroDEM TIF - 2.5Gb zip WMS, WMTS Last Update: 04/2008	<input type="checkbox"/>	<input type="checkbox"/>
Pan-European Imagery WMS Last Update: 2018	<input type="checkbox"/>	<input type="checkbox"/>
Open Geototeer GeoPackage - 114.9Mb zip WFS Last Update: 04/2021	<input type="checkbox"/>	<input type="checkbox"/>

I agree to the [licence terms](#) *

Keep me informed with news and data updates.

E-mail address: [Submit >](#)

[View our privacy policy](#)

Navigate: [EuroDEM](#) [EuroGlobalMap](#) [EuroRegionalMap](#) [Open Cadastral](#) [Open Geototeer](#) [Pan-European Imagery](#)

Contact: contact@eurogeographics.org



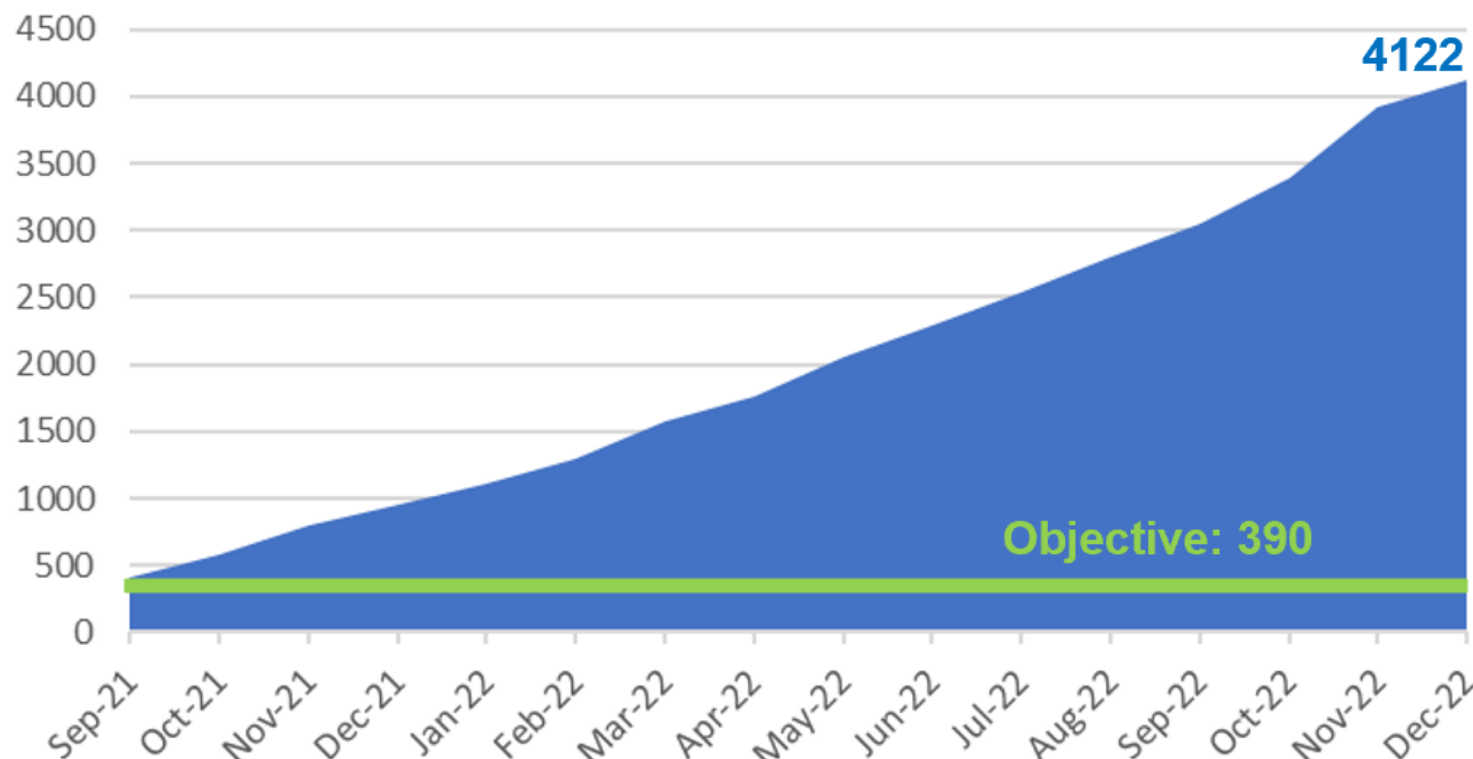
<https://www.mapsforeurope.org/>



A Great Success!

- > 4000 registered users
- 4700 dataset downloads
- 6 million web service transactions

Total Number of OME Interface Users



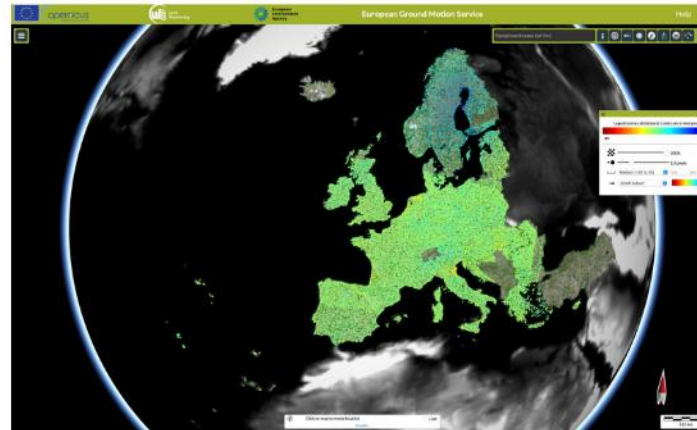
Co-financed by the European Union
Connecting Europe Facility

Case studies

<https://eurogeographics.org/more-than-maps-case-studies/>



United Nations (UN)



The European Environment Agency (EEA)

Delivering data to promote peace, prosperity and security

The European External Action Service (EEAS) is the European Union's (EU) diplomatic service, and since 2011 has carried out the EU's Common Foreign and Security Policy to promote peace, prosperity, security, and the interests of Europeans across the globe. It uses EuroRegionalMap, a pan-European dataset available through the Open Maps For Europe project, for planning military mobility and investment programmes.



"We need a coherent database, and we need data that we can trust and rely on. We need authoritative geospatial information, quality controlled, preferably from governmental sources with borders and boundaries that should reflect the EU view. We also need a common place where we can do planning. So, the 1:250 000 scale seamless open data is crucial for us in determining, for example, where we reinforce our bridges so that heavy trucks can cross them without breaking or planning our routing systems."

Lieutenant-Colonel Soenke Fischhoefer, Senior Geospatial Officer EUMS, EU External Action Service.

The External Action Service (EAS)



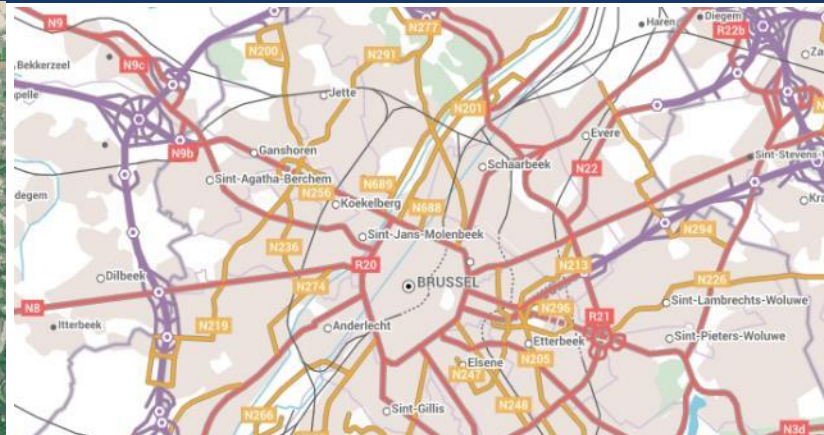
Co-financed by the European Union
Connecting Europe Facility

From OME to OME2



Co-funded by
the European Union

Digital Europe Programme
Grant Agreement No 101100625



Sustain - Enhance - Extend



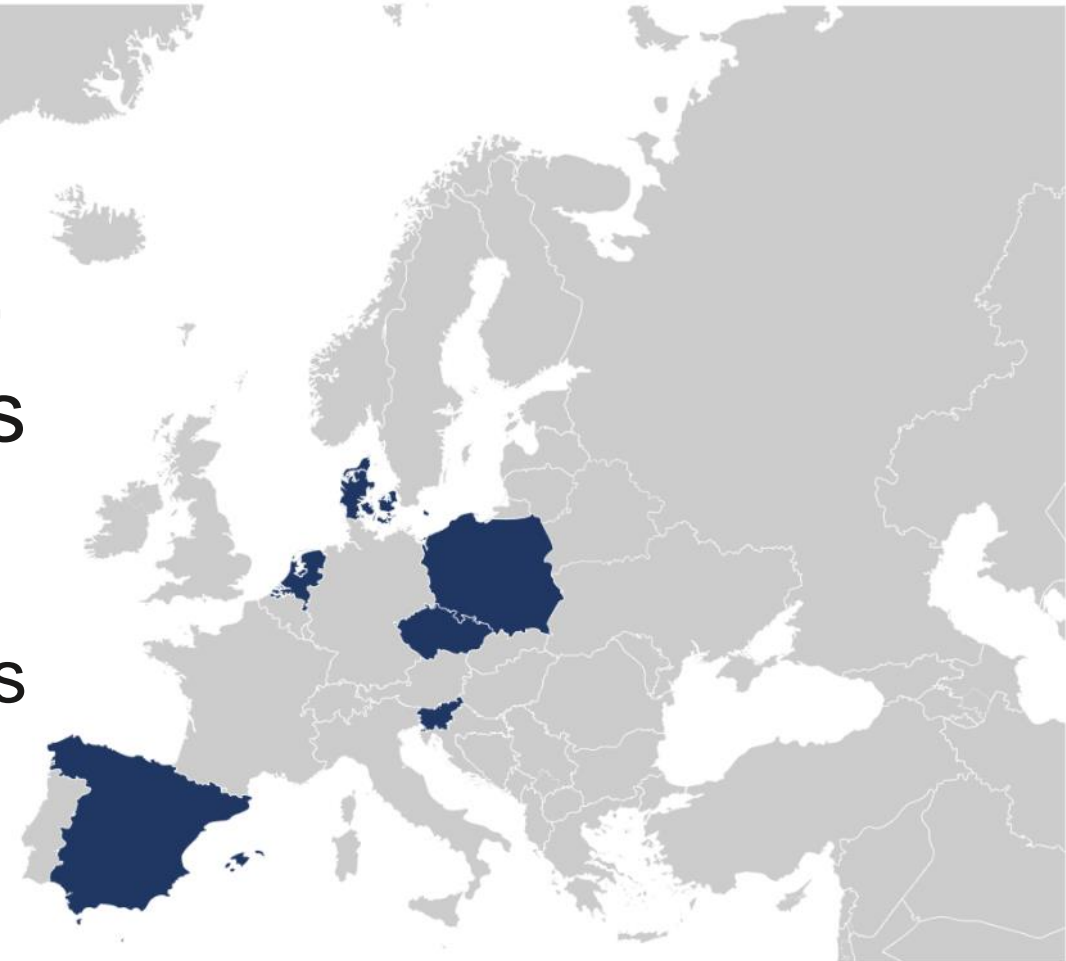
The Open Cadastral Map

HVD: Cadastral Parcels, Buildings, Addresses and Administrative Units

Sustain: Currently data from 6 countries provided through the OME interface

Extend: 9 additional countries

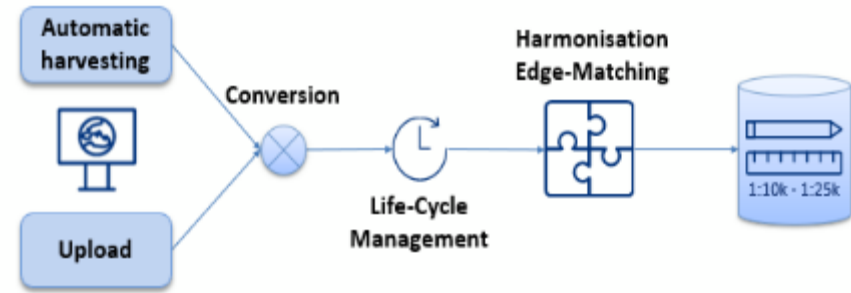
Enhance: New functionalities



Czech Republic
Denmark
Netherlands

Poland
Slovenia
Spain

Open Maps for Europe 2 (OME2)



Prototype

10 countries 3 themes

- Administrative Boundaries
- Transport Networks
- Hydrography



Large scale	Key Themes	Life-cycle management	Harmonised & edge-matched	Authoritative	Geographical Europe coverage



Summary

- The OME platform provides access to trusted harmonised, edge-matched open data from NMCAAs
- Successful, award winning project - increased the numbers of user by over 900%
- Built on the success of OME, OME2 will:
 - Provide continuation of the OME platform and the datasets available through it
 - Facilitate the creation of the large scale production process, to test the feasibility to produce large scale harmonised pan-European datasets
- Long term Sustainability

Thank you for your time and attention!

Questions?

sallie.payne@eurogeographics.org

