



# GSEU DAY

**GEOLOGICAL SERVICE** | **FOR EUROPE**



**Matt Harrison (BRGM)  
& the EGDI team**

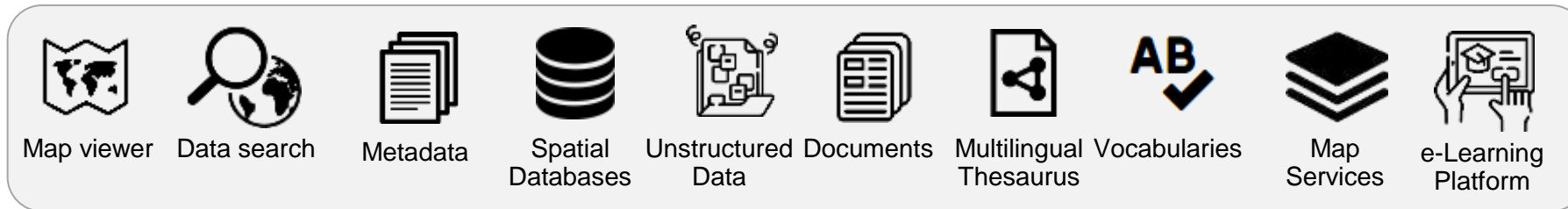
## **Trusted Geological Information**



# EGDI delivering FAIR data to support EU policy

Aim: a robust **sustainable** platform

Requires **collective effort** gathering data on all geology – thematic data provided by scientists, **consolidation, standardisation, harmonisation**, proper **description** using metadata and **accessibility** for reuse (FAIR)



2008

2013

2016



GeoERA  
INFORMATION  
PLATFORM

2018



GSEU  
GEOLOGICAL FOR  
SERVICE EUROPE

2022



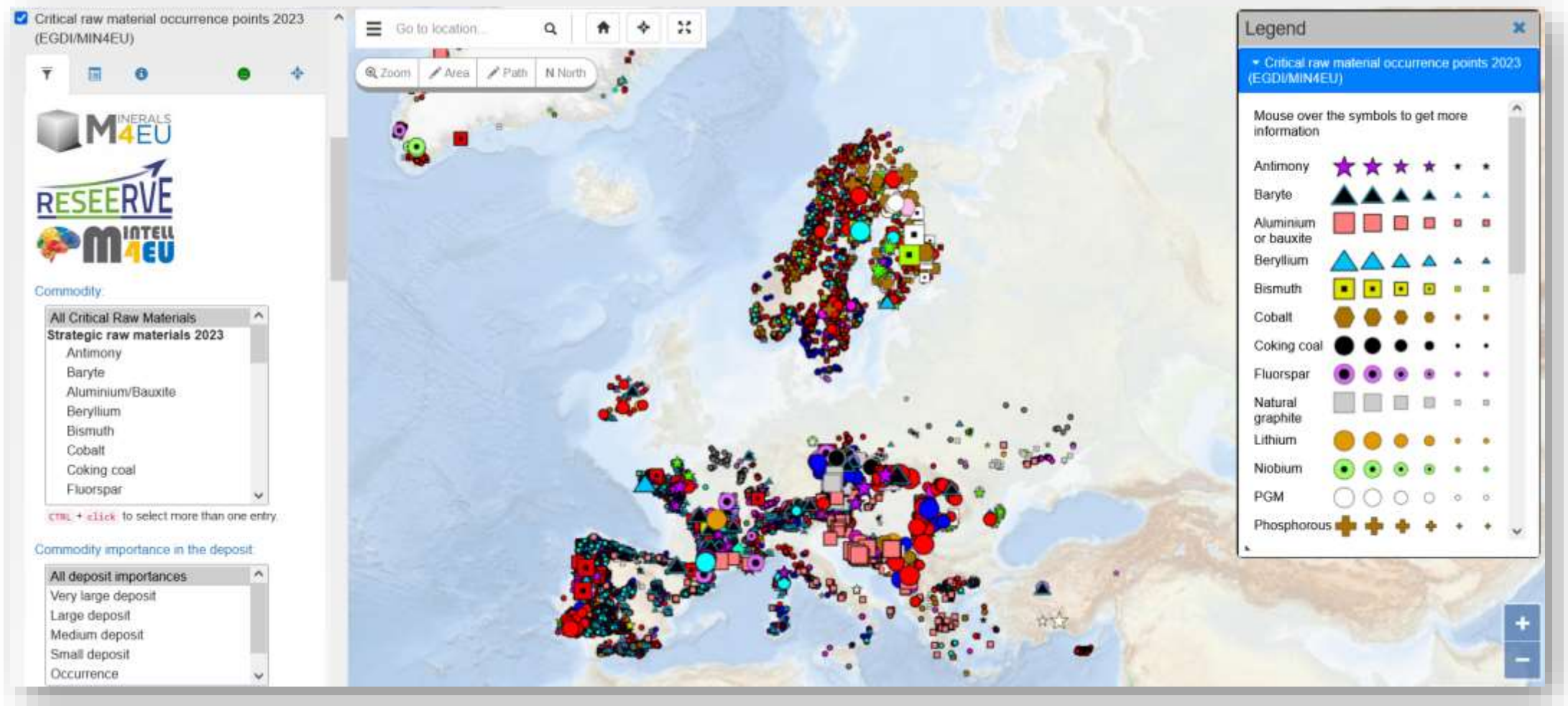


# Landscape



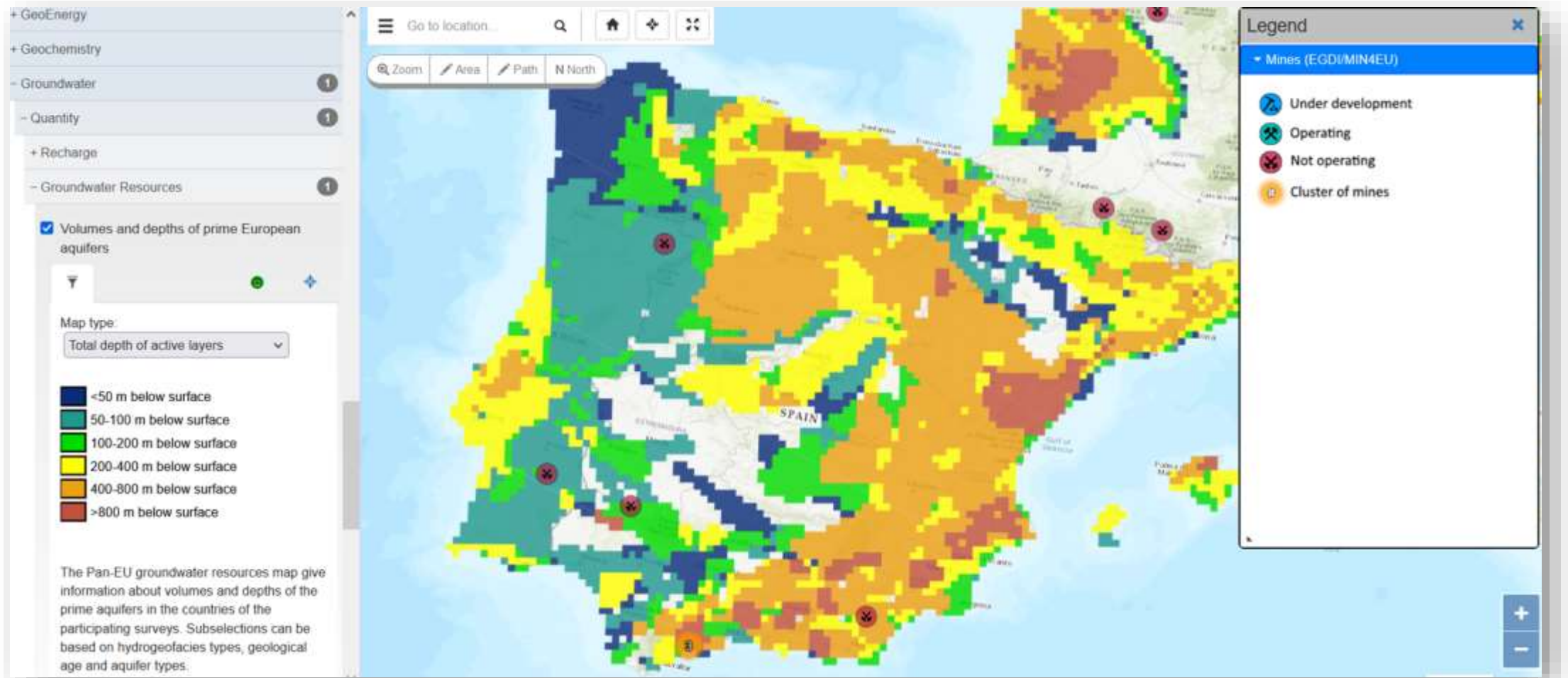


# Up-to-date EGD Data: EU CRM 2023





# Policy and Society Support





## Connecting to EOSC: Search the « Marketplace »

The screenshot shows the homepage of the European Open Science Cloud (EOSC) Marketplace. The top navigation bar includes the EOSC logo and links for 'About EOSC', 'Browse Marketplace', 'Providers Hub', 'Monitoring', 'Status', and 'Contact us'. A secondary navigation bar contains 'About', 'Get Inspired', 'Funding', 'News & Events', and 'Documents & Policies'. The main content area features a dark blue background with a network of glowing nodes and lines. The EOSC logo is prominently displayed, followed by the text: 'Your unified access to the European hub of research data, tools and services for innovation and education'. Below this is a search bar with the placeholder text 'Search...' and a dropdown menu set to 'Marketplace'. Two statistics are highlighted: '3m+ Assets in the marketplace' and '300+ Content providers'. At the bottom, there are three buttons: 'For Researchers', 'For Providers', and 'For Businesses'.



# TCS GIM Data Services on the EPOS Data Portal

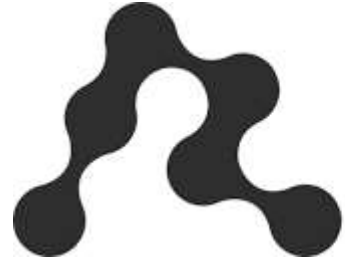
The screenshot displays the EPOS 1.0.16 data portal interface. The main map shows Europe with numerous blue circular data points representing borehole locations. The sidebar on the left contains a search bar and a 'Geological Information and Modeling' section with two service cards:

- Borehole View Service**
  - Categories: [Boreholes](#)
  - Visible on: [Map](#)
  - Status:
- Advanced search filters (1 of 1)**
  - Coordinates: 90, -90, -180, 180
  - Buttons: [Set to defaults](#), [Apply](#)
- Geological Feature Download Service**
  - Categories: [Geological Maps](#)
  - Visible on: [Map](#), [Table](#)
  - Status:

At the bottom of the sidebar, there are controls for 'Results per page: 10' and 'Page 1 of 1' with navigation arrows.



# Data Spaces



## Green Deal Dataspace

Resilience & Sustainability



Nx

### Data spaces as ecosystem

Data spaces based on common design principles enable a dynamic, secure and seamless flow of data/information between parties and domains as well as entirely new services for users, based on enhanced transparency and data sovereignty. A new user behavior and digital culture arises, as users learn to play by the rules and use data (both their own and other users' data) in an ethical way. Data spaces as federation enable multiple participants to discover data resources across underlying platforms and their administrative domains.



### Soft Infrastructure and neutral building blocks

1x

The soft infrastructure provides a level playing field for data sharing and exchange. It is made up of technology-neutral and sector-agnostic agreements and standards specifying how organisations and individuals can participate in the data economy and how they need to act and behave in compliance with commonly agreed rules and directives.

INTEROPERABILITY	TRUST	DATA VALUE	GOVERNANCE
Data Models & Formats	Identity management	Metadata & Discovery Protocol	Overarching cooperation agreement
Data Exchange APIs	Access & usage control / policies	Data Usage Accounting	Operational (e.g. SLA)
Provenance and traceability	Trusted Exchange	Publication & Marketplace Services	Continuity model

# OGC and IDSA sign Memorandum of Understanding

INTERNATIONAL DATA SPACES ASSOCIATION

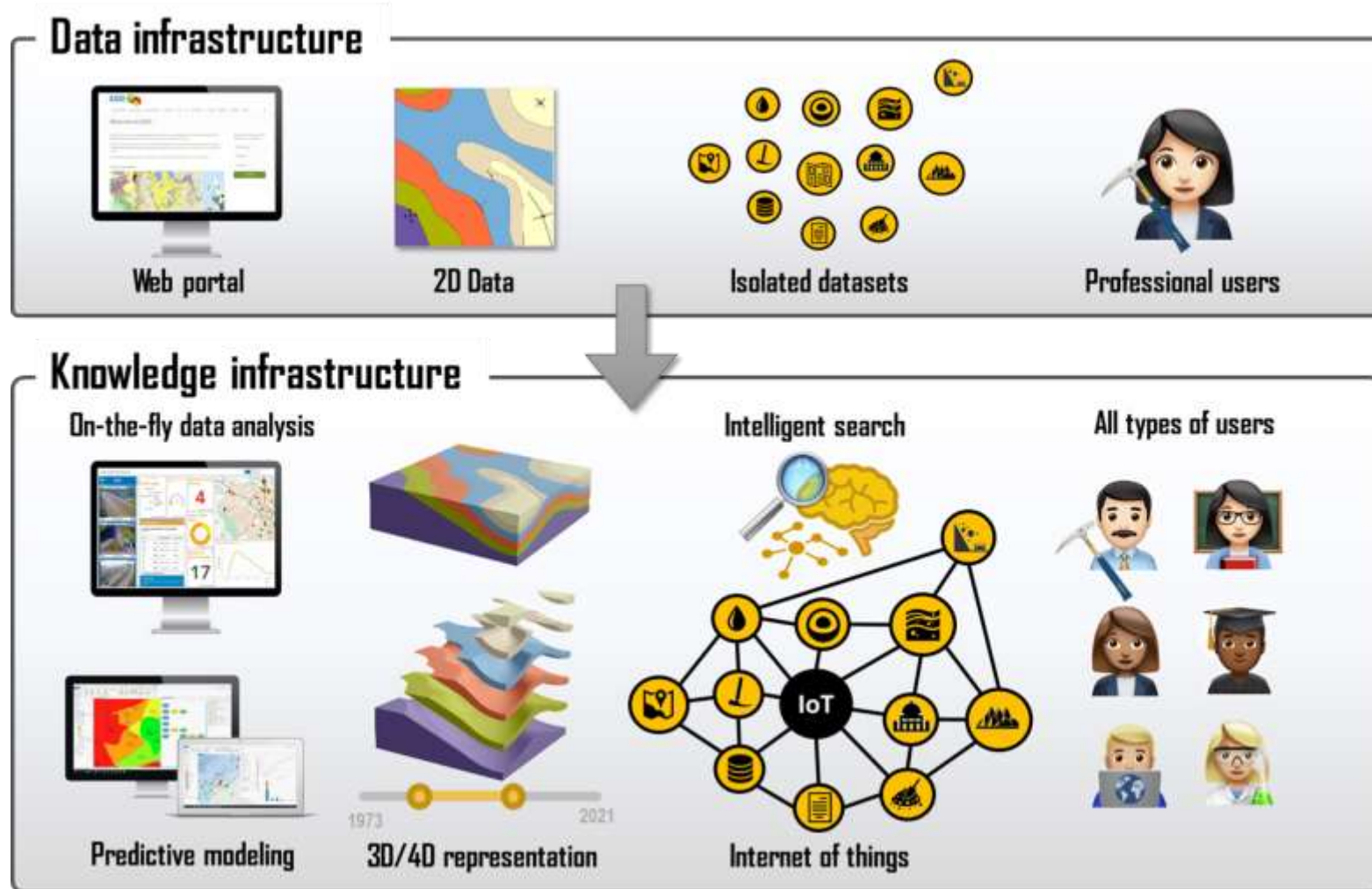
Open Geospatial Consortium

GSEU  
GEOLOGICAL SERVICE FOR EUROPE





# The Future: Towards a Knowledge Infrastructure





**GSEU**  
GEOLOGICAL FOR  
SERVICE EUROPE



# **BUILDING A KNOWLEDGE NETWORK**

[WWW.GEOLOGICALSERVICE.EU](http://WWW.GEOLOGICALSERVICE.EU)