



GSEU

GEOLOGICAL SERVICE | FOR EUROPE

GSEU WP2 TRAIN-THE-TRAINER COURSE

Case studies - Slovenia

Level 2

Duška Rokavec, GeoZS

Ljubljana, 14-15 May 2024



Funded by
the European Union



www.geologicalservice.eu



16h30 – 18h00

Case studies - Slovenia



Bridging the ABC System to UNFC

Slovenia case studies

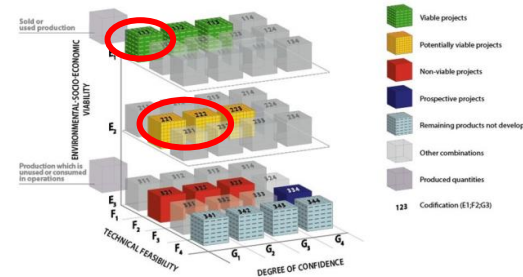


Content

- **Brief description of 3 case-studies to be classified :**
 - 1- **Active surface mine of non-metal (chert),**
 - 2- **Historical metal underground mine (Hg),**
 - 3- **Abandoned clay pit .**
- **Key facts for reserves classification**
- **UNFC classification using EFG codes for selected deposits (at the date)**

1- Active quarry of chert (SiO₂)

- ✓ mining right granted / all required permits are obtained,
- ✓ extraction and processing in “green manner”,
- ✓ use for refractories (products with high added value),
- ✓ “ABC” reserves are classified.



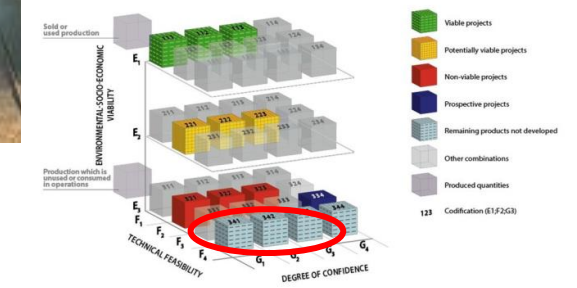
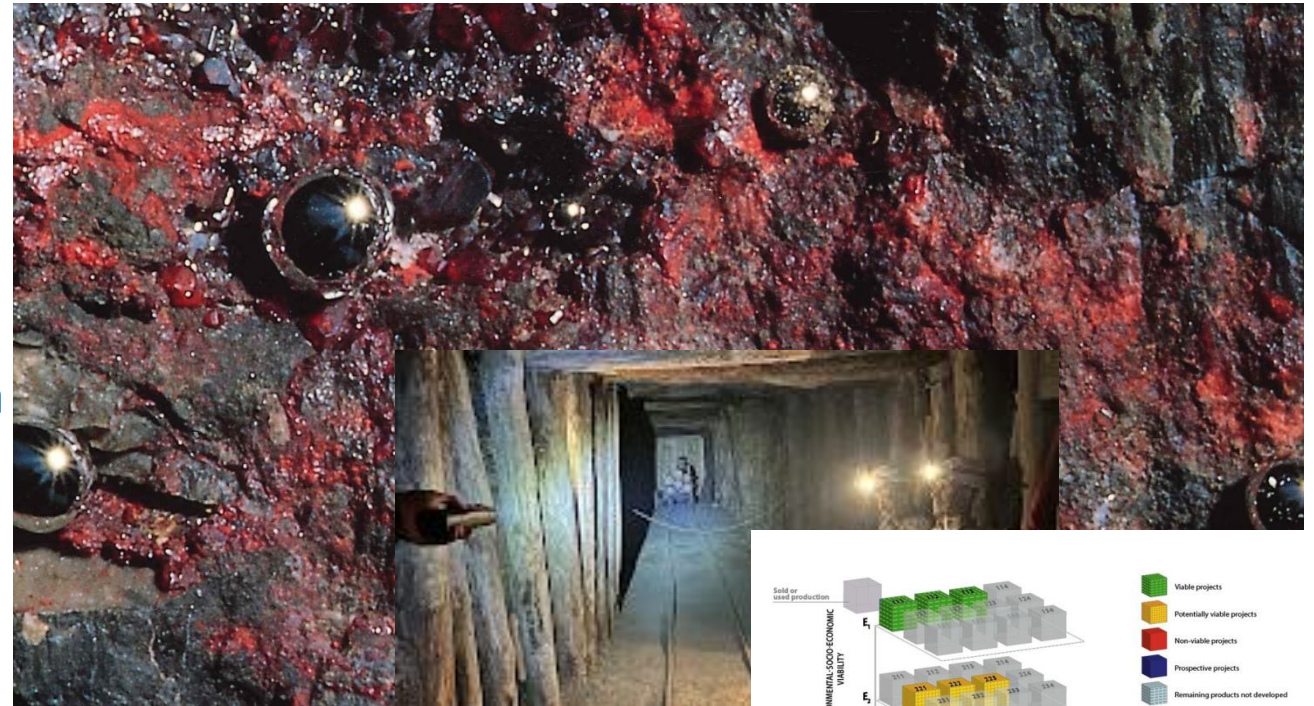
Translation of national ABC system to UNFC

ABC system categories	ABC system classes	economic efficiency (CRIRSCO)	UNFC E _{axis}	UNFC F _{axis}	UNFC G _{axis}	Explanation
economic reserves	A, B	proved reserves	1.1	1.1	1	Reserves A, B, C ₁ , COULD BE EXPLOITED (in economic, environmental and social accepted way)
non-economic reserves	B	measured resources	2.3	2.3	1, 2	Reserves that could NOT be exploited due to different reasons, resources close to permitted area border etc; detailed surface explored...
TOTAL reserves	A+B	X mil m ³				



2 - Historical metal mine (Hg)

- ✓ mined for 500 years (since 1490),
- ✓ on UNESCO heritage list,
- ✓ mining museum,
- ✓ production stopped to toxicity for human and environment,
- ✓ mine is irreversible closed,
- ✓ “ABC” ore reserves remain in situ.



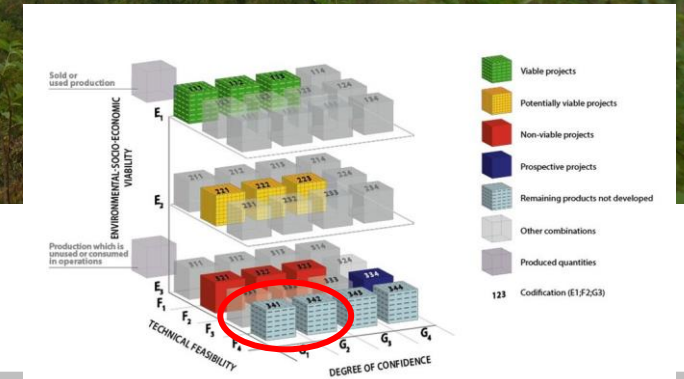
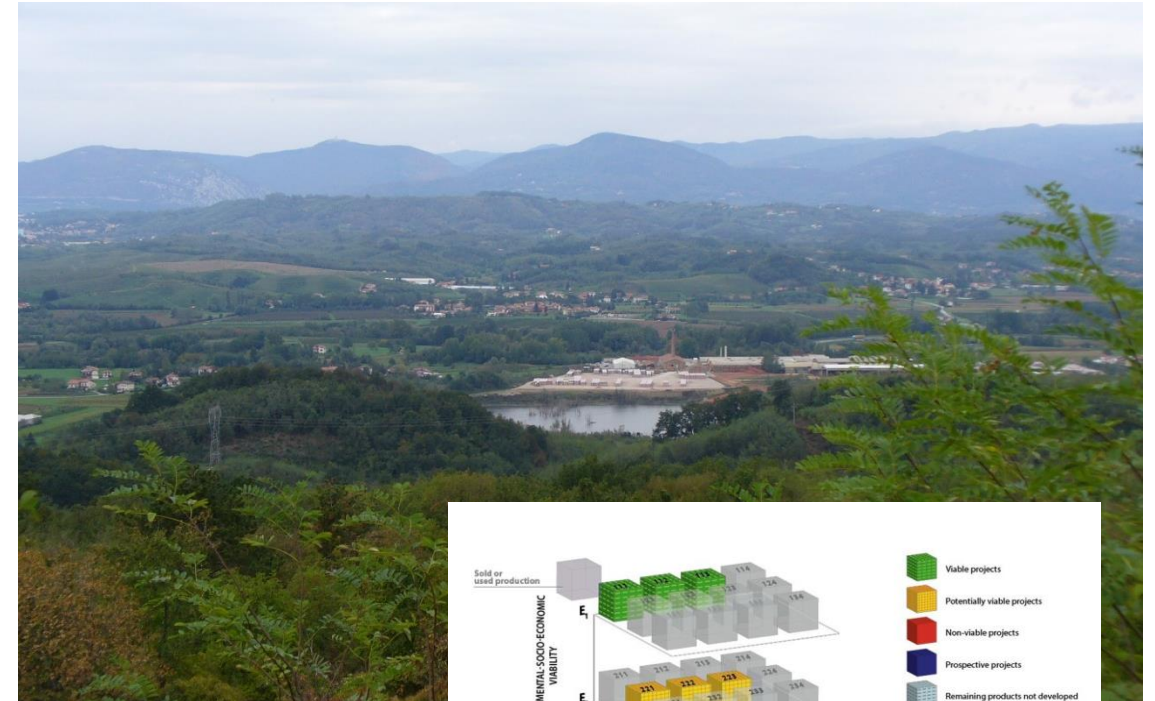
Translation of national ABC system to UNFC

ABC system categories	ABC system classes	economic efficiency (CRIRSCO)	UNFC E _{axis}	UNFC F _{axis}	UNFC G _{axis}	Explanation
non-economic reserves	A, B, C ₁	measured resources	3.3	4	1,2	Reserves that could NOT be exploited (due to economic, environmental, social or technical reasons), mine is permanently and finely closed.
resources	C ₂	indicated resources	3.3	4	2,3	Indicated resources that could NOT be exploited, mine is permanently and finely closed.
TOTAL volume	A+B+C ₁ +C ₂	10 mil.t ore				



3 - Abandoned brick clay pit

- ✓ mining right expired, extraction was stopped,
- ✓ most of clay reserves are depleted,
- ✓ new clay-pit is open nearby, brick factory production goes on,
- ✓ remediation was completed into new habitat.



Translation of national ABC system to UNFC

ABC system categories	ABC system classes	economic efficiency (CRIRSCO)	UNFC E _{axis}	UNFC F _{axis}	UNFC G _{axis}	Explanation
non-economic reserves	C ₁	measured resources	3.3	4	1, 2	Reserves that could NOT be exploited (due to economic, environmental, social or technical reason), remaining clay not developed for proj. or prospect.proj.
TOTAL		X t clay				



GSEU

GEOLOGICAL SERVICE | FOR EUROPE

Thank you for your attention

www.geologicalservice.eu



Funded by
the European Union

