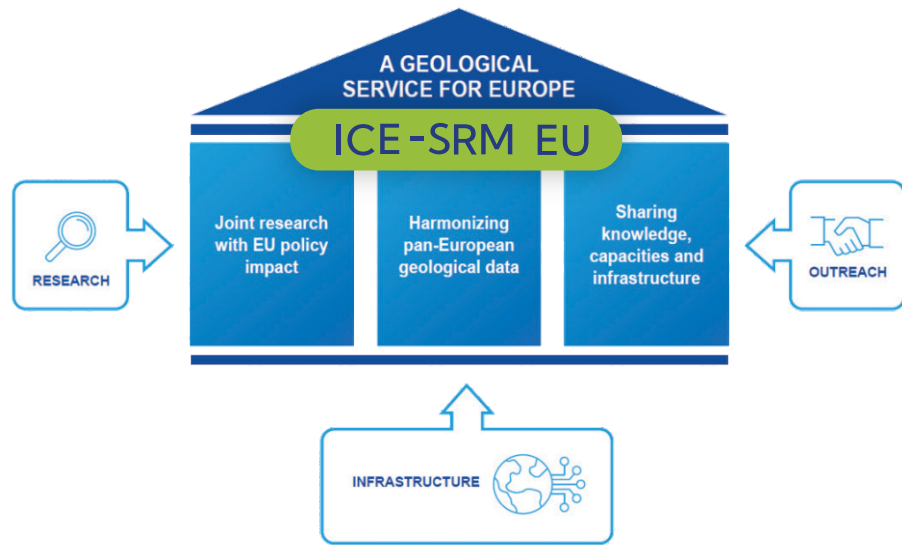
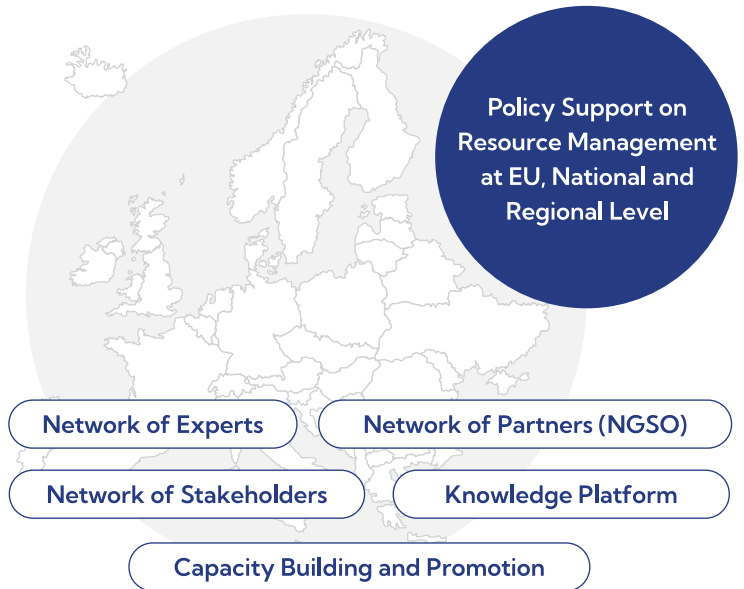


EU International Centre of Excellence on Sustainable Resource Management



Capacity Building and Knowledge Centre in support of UNFC and UNRMS



GSEU
GEOLOGICAL SERVICE FOR EUROPE

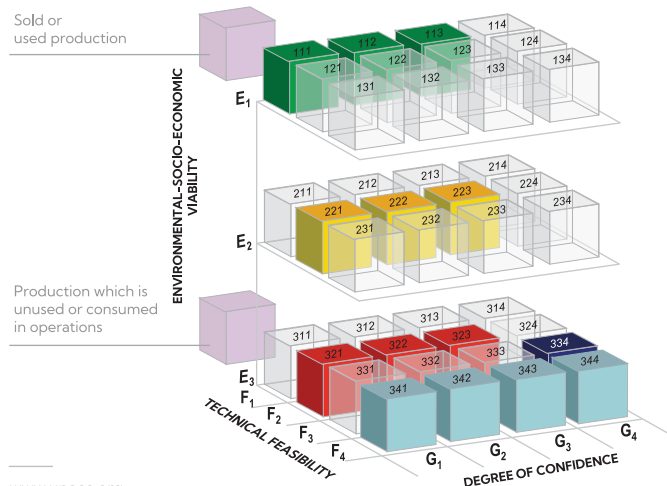


Funded by the European Union

UNECE

ICE-SRM

Promotion, Capacity Building on UNFC

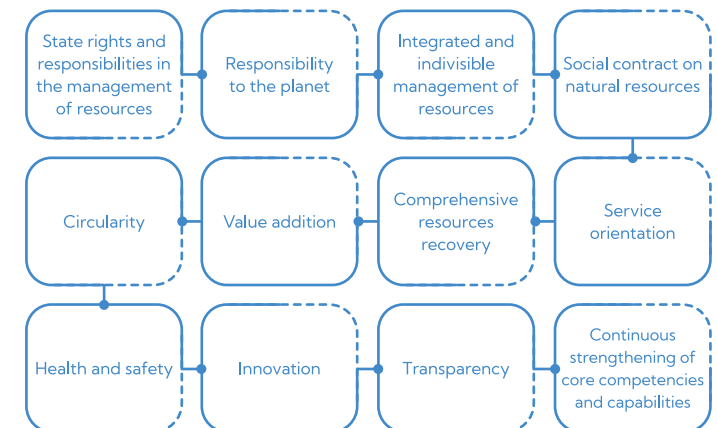


Support UNRMS, in line with the UN 2030 Agenda for Sustainable Development



www.sdgs.un.org

UNRMS Fundamental Principles



www.unece.org



The **European International Centre of Excellence on Sustainable Resource Management (ICE-SRM EU)** will be a capacity building and knowledge centre supporting the United Nations Classification Framework (UNFC) and United Nations Resource Management System (UNRMS), which will aim to fulfil the United Nations Sustainable Development Goals (UN SDG) by integrating information on the availability of natural resources and building strong EU-level expertise on Critical Raw Materials (CRM) intelligence.

The ICE-SRM EU will operate as a network of partners and experts with headquarters that facilitate and support the network and its activities, such as promotion and capacity building, including related methodological and technical activities, and relevant databases.

euicesrm@geologicalservice.eu

<https://www.geologicalservice.eu/areas-of-expertise/raw-materials/european-international-centre-of-excellence-on-sustainable-resource-management>

