



GSEU

GEOLOGICAL | FOR
SERVICE | EUROPE

The critical need for a Geological Service for Europe

Julie Hollis
EuroGeoSurveys

www.geologicalservice.eu



Funded by
the European Union



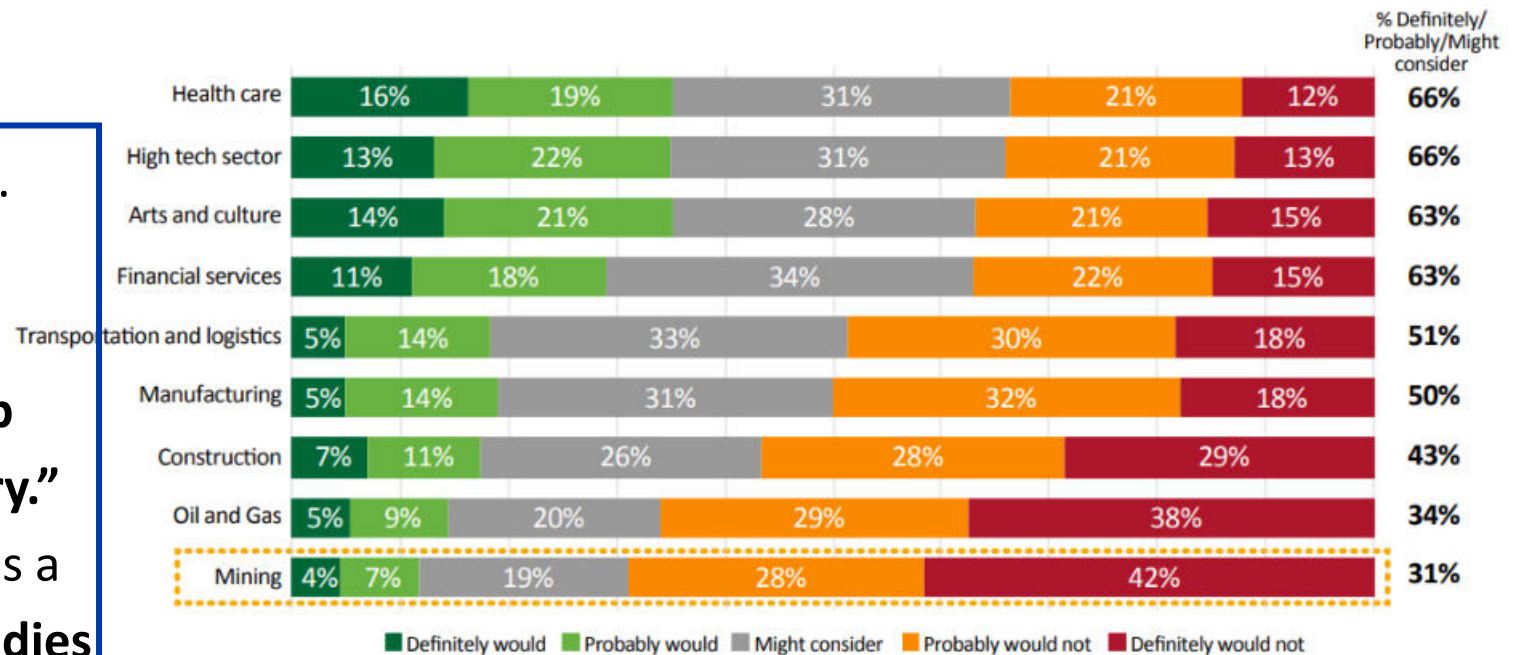
The Geological Surveys of Europe



What is geology?

Online survey of > 600 **British** people. Respondents viewed geoscience as “old fashioned, boring, and environmentally damaging...poor job prospects outside oil and gas industry.” Answered the question of “What does a geologist do?” with little beyond “**studies rocks**” or similar (Rogers et al., in press).

Figure 15: Responses of Young Canadians (Ages 15 to 30) to the Survey Question: *How likely, if at all, would you consider working in these sectors?* (Dec 2020)



Source: Mining Industry Human Resources Council (2021); Abacus Data (2020).

3,000 15- to 30-year-old **Canadians** surveyed placed mining **last** as a sector they would consider working, below oil and gas

Youth perceptions of the resources industry (Australian Institute of Mining and Metallurgy, 2021). 94% of respondents from across Australia self-reported knowing “a little bit” or “nothing at all” about the resources sector

Harmonized land surface infrastructure and cover data








Harmonized land surface infrastructure and cover data

Open Maps for Europe

Providing easy access to pan-European open data created using official map, geospatial and land information.

[Access Data](#) 

[Explore Map](#) 

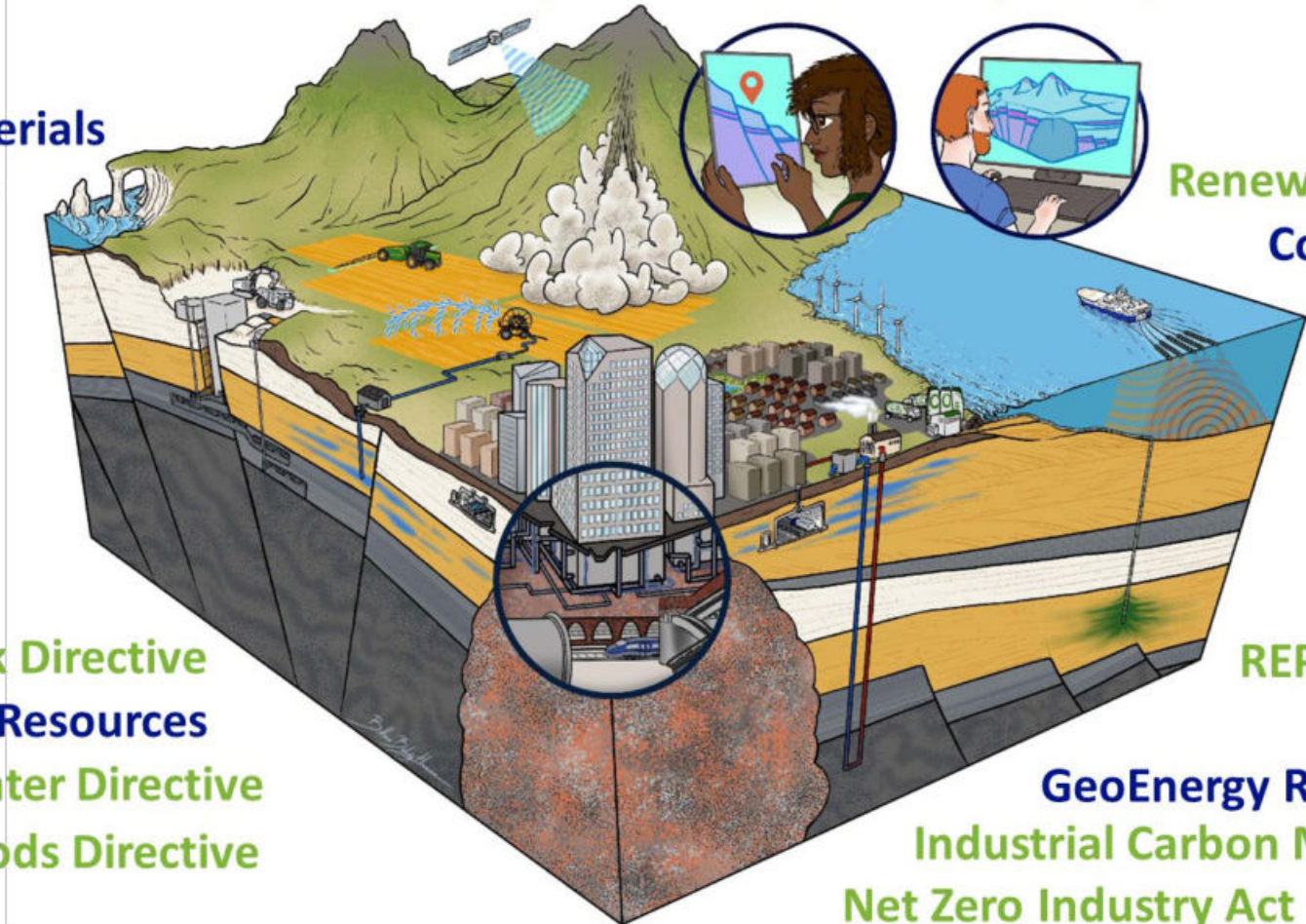
 **Co-financed by the European Union**
Connecting Europe Facility



Green Deal Policy & Earth Systems are Internconnected

INSPIRE Directive Geological Framework Setup European Data Strategy

Critical Raw Materials
The Critical Raw Materials Act



Renewable Energy Directive
Coastal vulnerability &
Windfarm siting
Marine Strategy

Water Framework Directive
Groundwater Resources
Groundwater Directive
Floods Directive

REPower EU

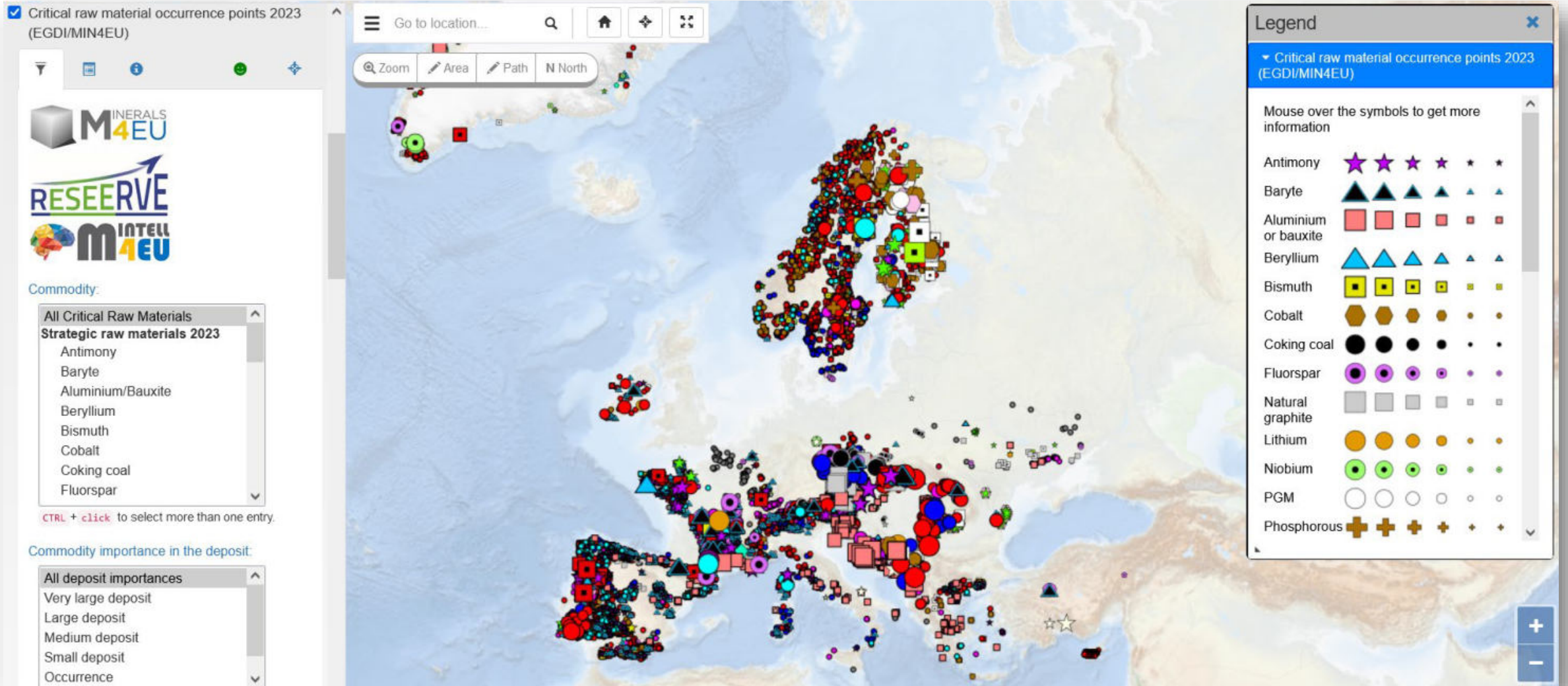
GeoEnergy Resources
Industrial Carbon Management Strategy
Net Zero Industry Act



The core mission of GSEU's Raw Materials group is to provide high quality data and expertise to boost domestic CRM production.

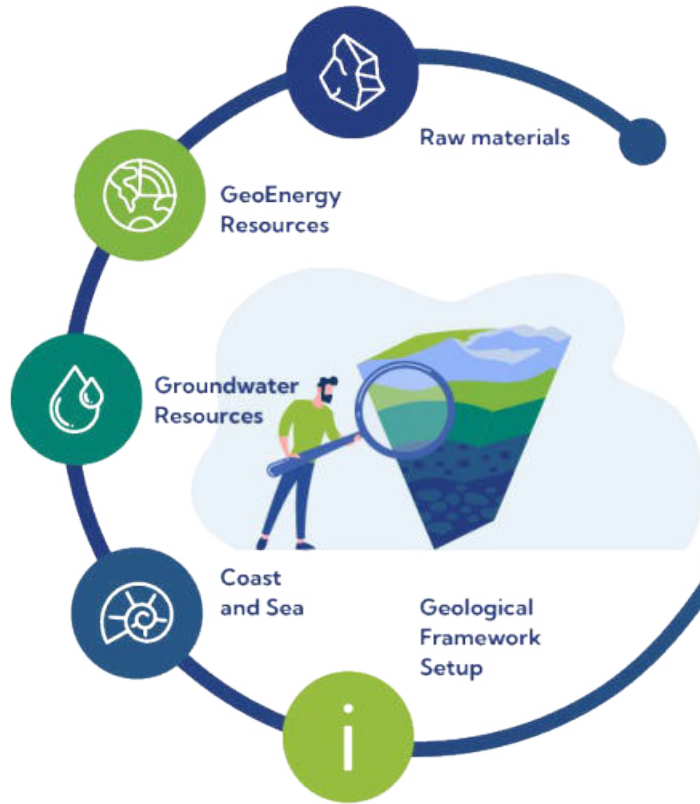


<https://www.europe-geology.eu/>





Geological Service for Europe (GSEU) 5-year project



Developing harmonised data & Information service



Developing Information structure



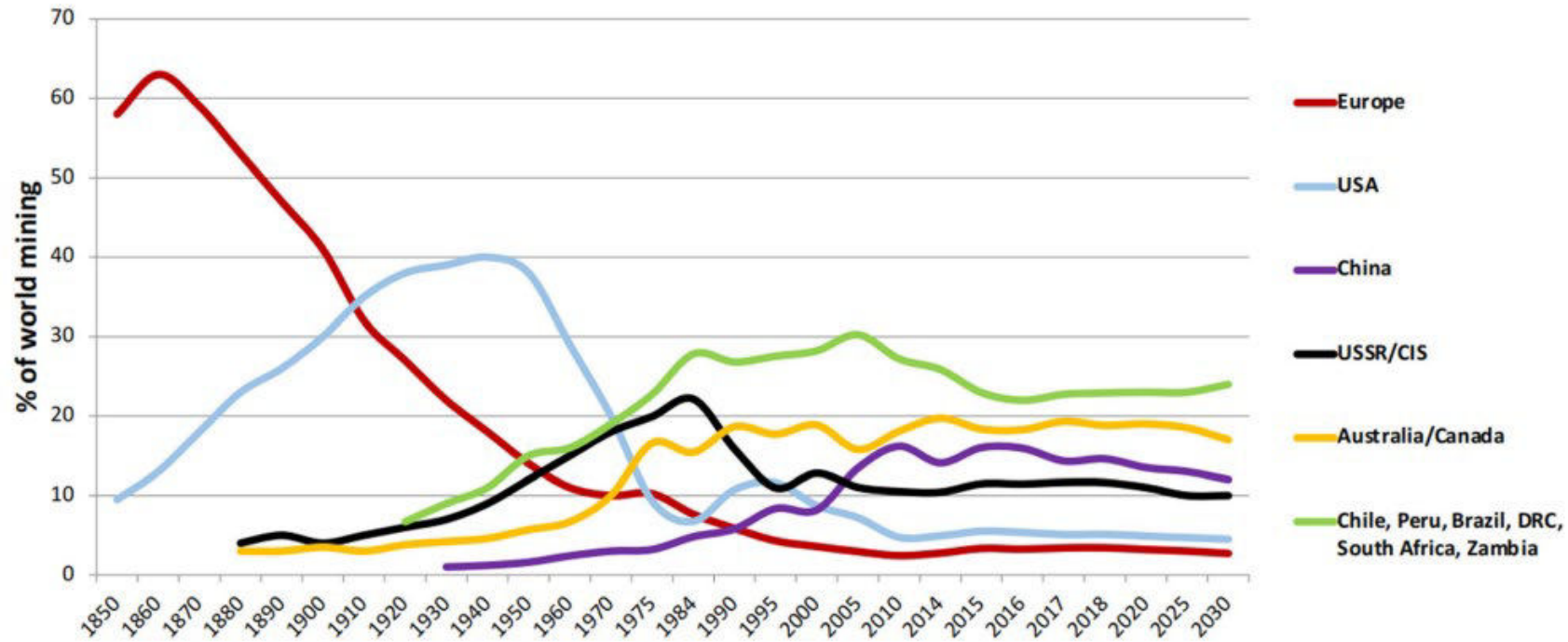
Communication, dissemination, exploitation & outreach



Locus of world mining 1850-2030

metals and industrial minerals

(per cent of value of total world production excluding coal)



Source: RMG Consulting 2021

Fig. 3 World mining trends 1850–2030

From Regueiro and Alonso-Jimenez (2021)



EU International Center of Excellence (ICE) on Sustainable Resource Management (SRM)



To provide accurate and high-quality reports, comparable throughout the EU and globally, each EU Member State needs appropriately trained experts.

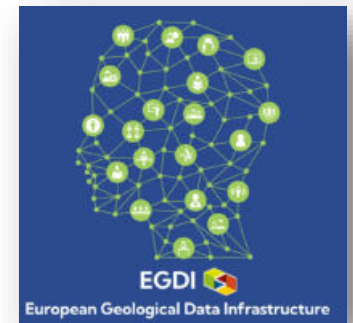
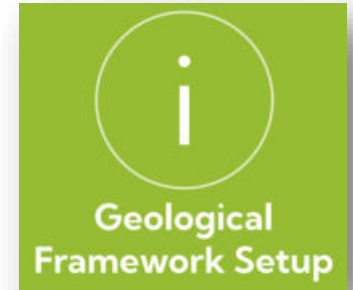
The ICE SRM will support the implementation of the CRMA by establishing and maintaining a network of experts.



 **GSEU**
GEOLOGICAL FOR SERVICE EUROPE

GEOLOGICAL SERVICE FOR EUROPE

WWW.GEOLOGICALSERVICE.EU





Building our network and support for the Geological Service for Europe

